

Dublin City Council - Active Travel Programme Office



This is a transportation initiative being delivered by Dublin City Council and funded by the National Transport Authority.



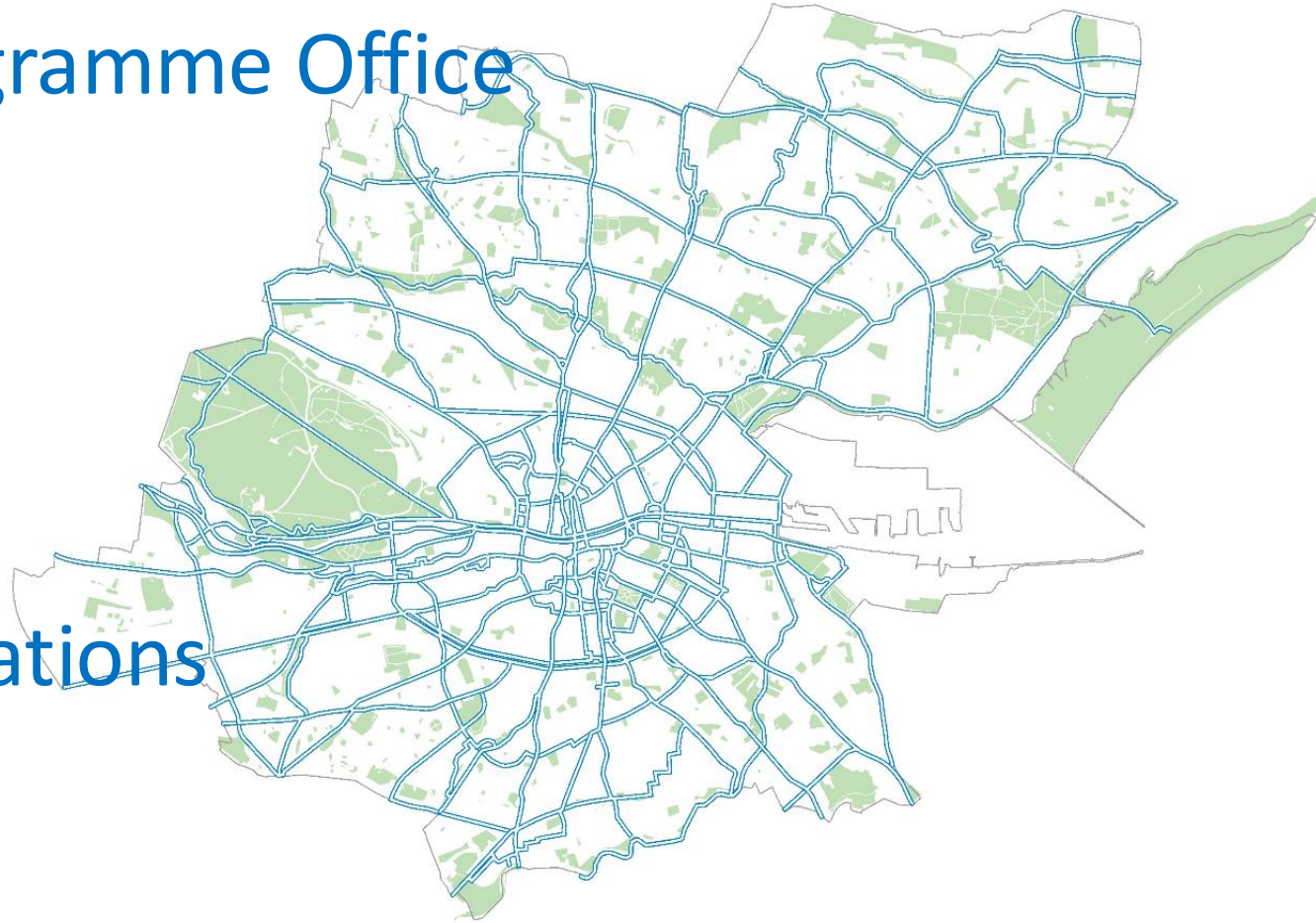
Tionscatal Éireann
Project Ireland
2040



Comhairle Cathrach
Bhaile Átha Cliath
Dublin City Council

Agenda

- About the Active Travel Programme Office
- Active Travel Network
 - General Overview
 - Central Area Projects
- Community Engagement
 - Disabled Persons Organisations
- Q&A / AOB



A map of the Dublin City Council area, showing the city's boundaries and a network of roads. The map is overlaid with a grid of blue lines representing roads. The text "About the Active Travel Programme Office" is centered over the map in a large, bold, blue font.

About the Active Travel Programme Office

Active Travel Programme Office

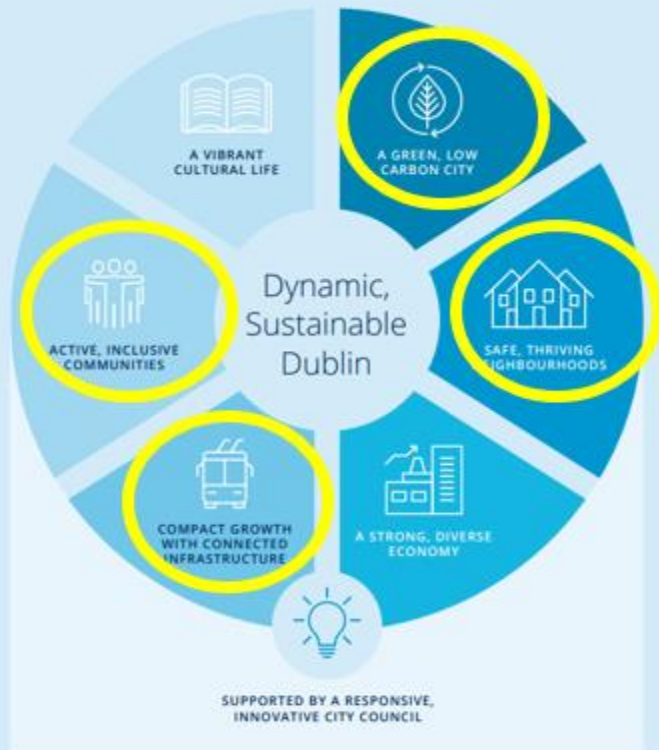
Our Vision

- Develop a safer, inclusive and sustainable **'walk-wheel-cycle'** network.
- Enhance quality of life by improving **access, connectivity and sustainable mobility** for all, whilst reducing transport-related carbon emissions.
- Support the **reprioritisation of road space** away from private vehicles towards sustainable modes of transport.



Active Travel Programme Office

Our Goals for the City
2020-2024



Ensure we work to the objectives set out in the

- Corporate Plan
- Climate Action Plan
- City Development Plan

Statutory process we use to implement our projects

- Part 8 of the Planning and Development Act
- Section 38 of the Road Traffic Act

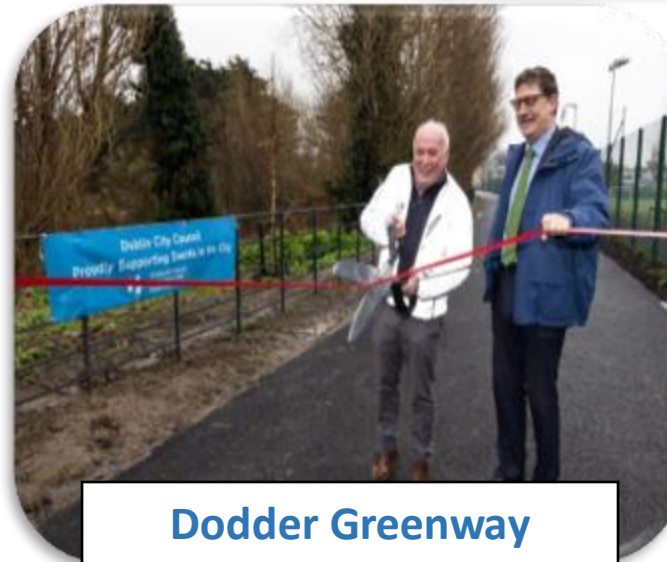


Active Travel Infrastructure in Dublin City

Active Travel Programme Office

Progress to Date

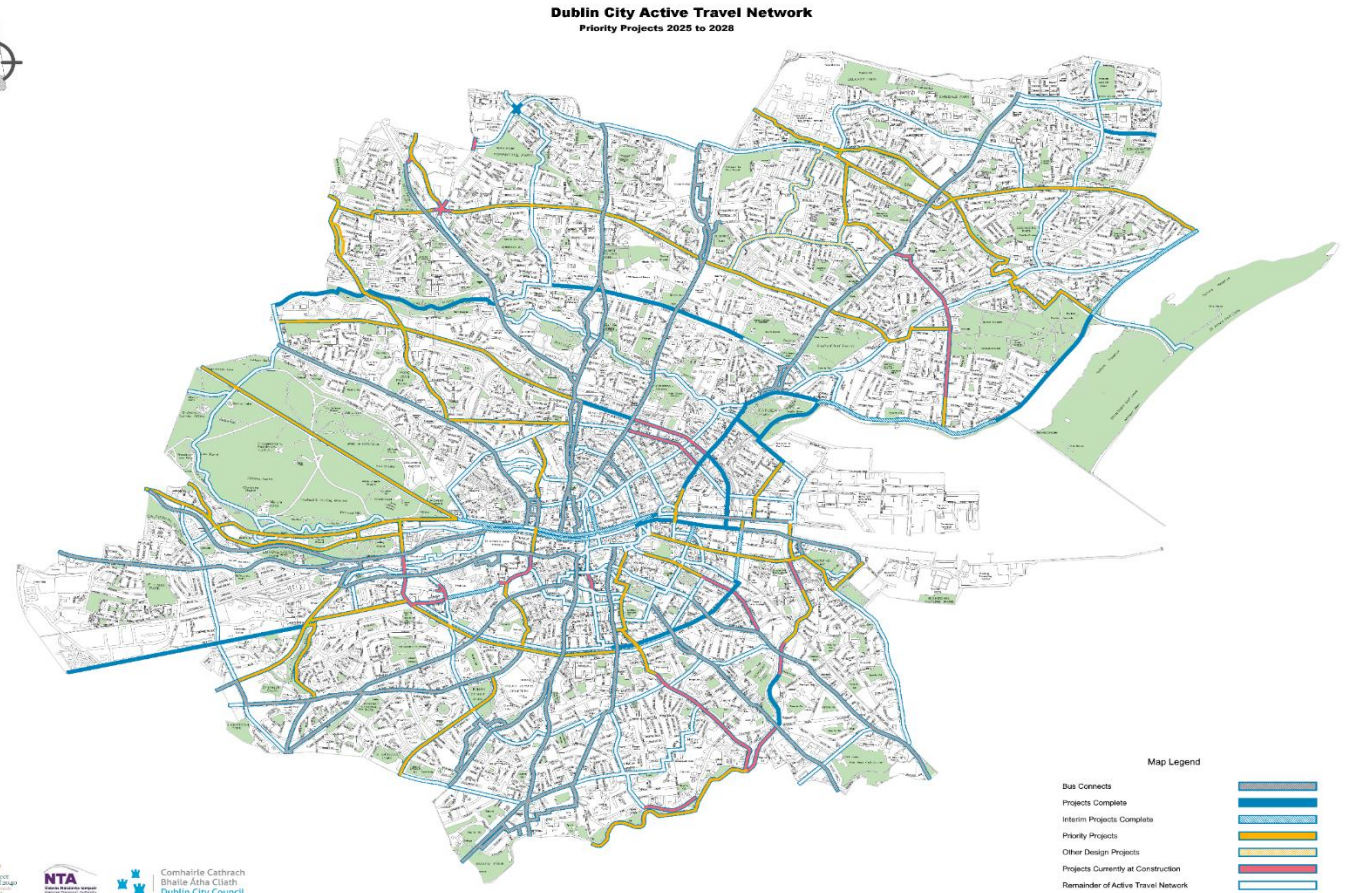
- At this stage of the programme, the Active Travel Network has grown to 35km.
- When completed the network will be 314km. DCC will deliver **214km** and the remainder will be delivered via BusConnects.
- **45** projects at planning and design stage.



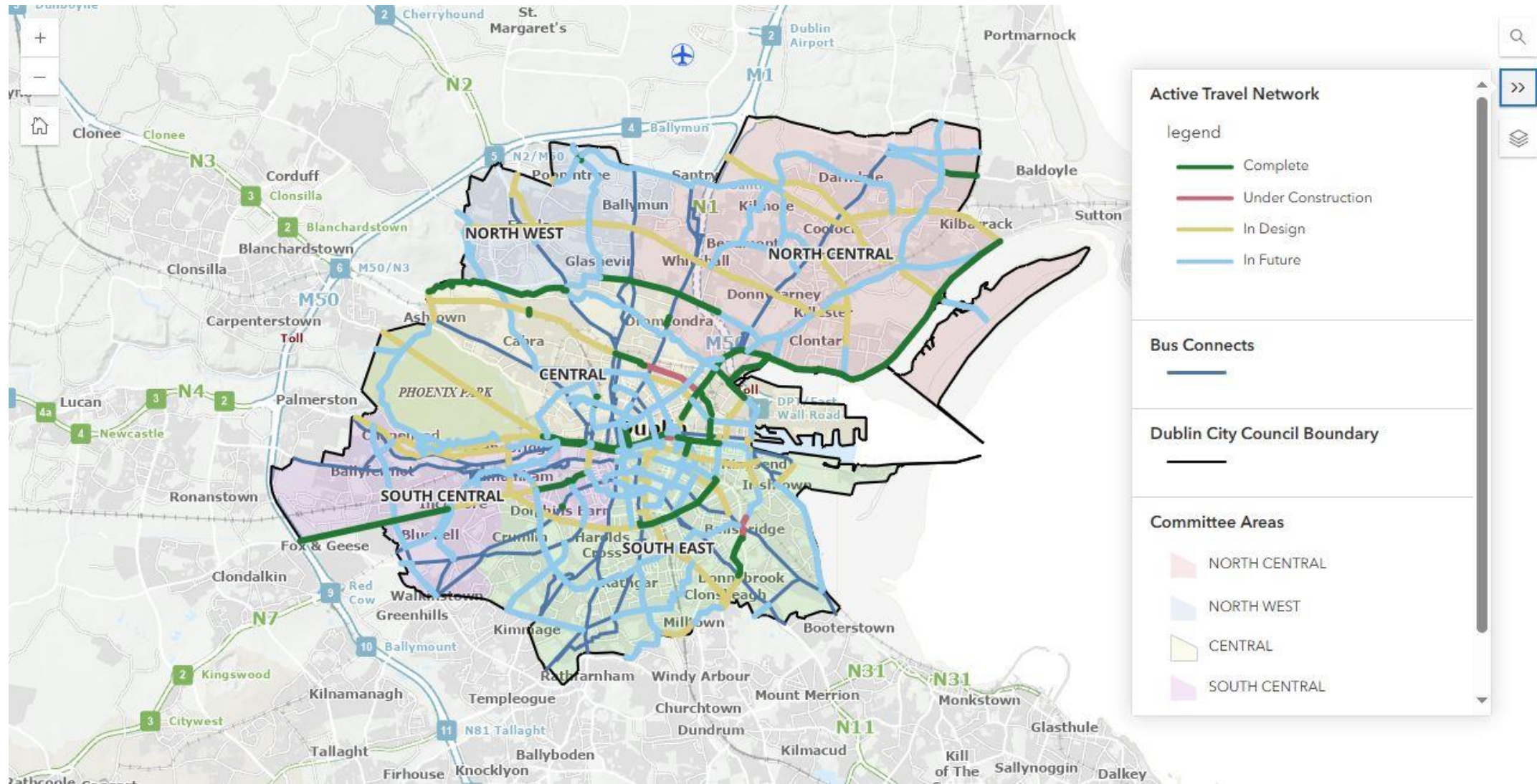
Delivery Targets 2028

- 74 km Delivered
- 24 km In Construction
- 19 km Shovel Ready

Total 117 km

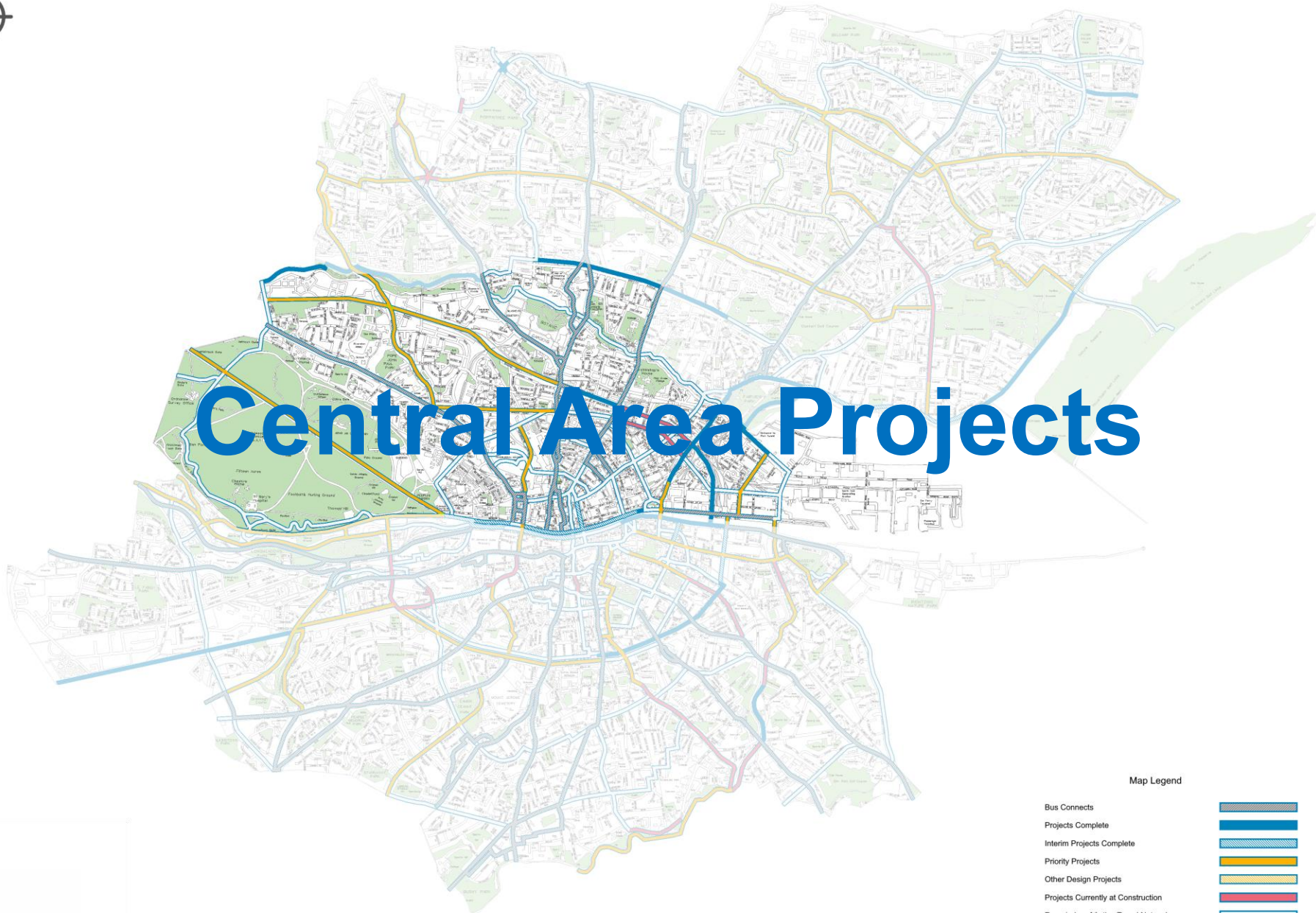


Active Travel GIS Map





Central Area Projects

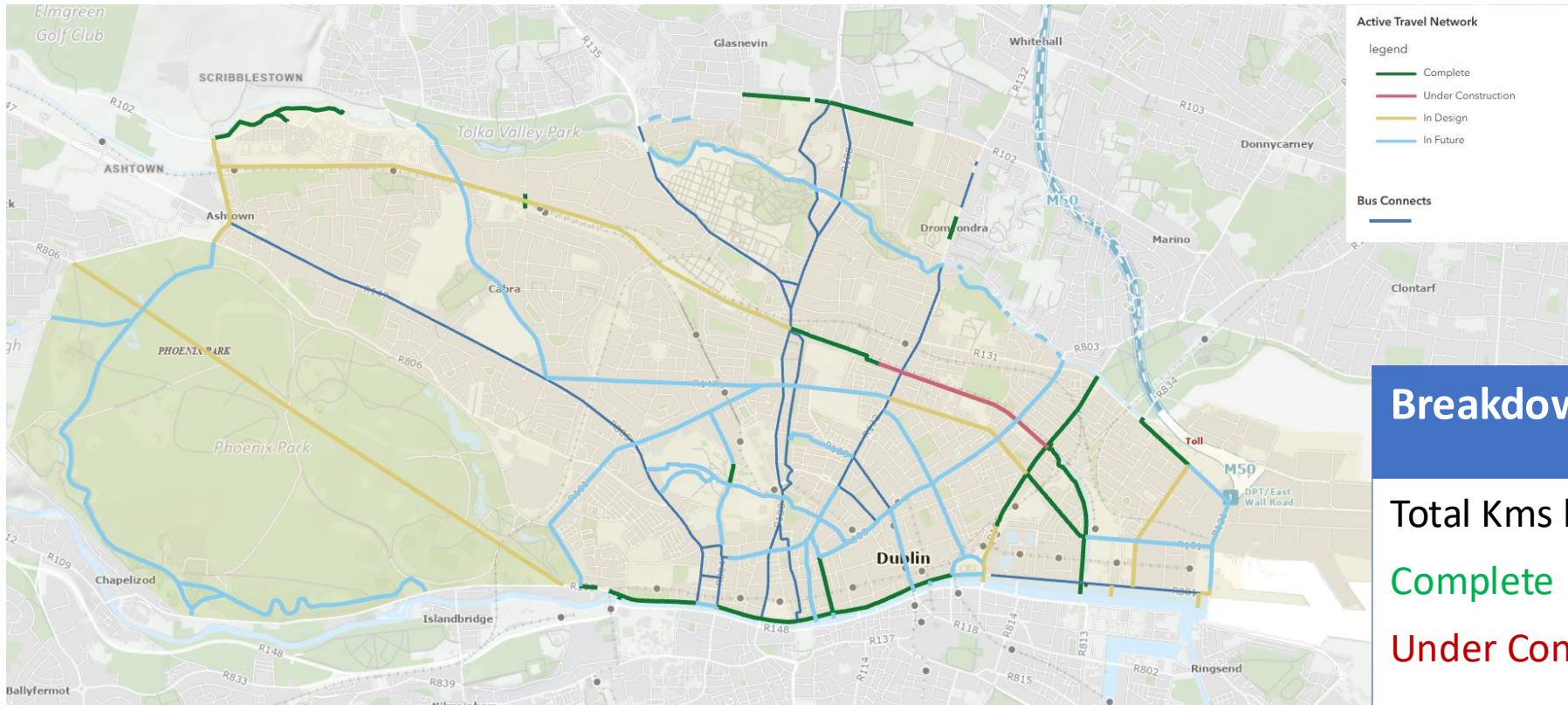


Map Legend

- Bus Connects
- Projects Complete
- Interim Projects Complete
- Priority Projects
- Other Design Projects
- Projects Currently at Construction
- Remainder of Active Travel Network



Active Travel Network Delivery Central Area



Breakdown of Central

Total Kms by DCC	53km
Complete	10km
Under Construction	1.4km
In Design	12.3km
In Future	29.3km
Bus Connects	18.7km

Central Area, Projects in Construction:

Clontarf to City Centre

- Scheme reached substantial completion at the end of 2024. Remainder of the snagging works are expected to be completed at the end of Q2 2025. Art Installations to be installed
- Outstanding paving works outside the Burke's Bar, Amiens Street are now progressing well



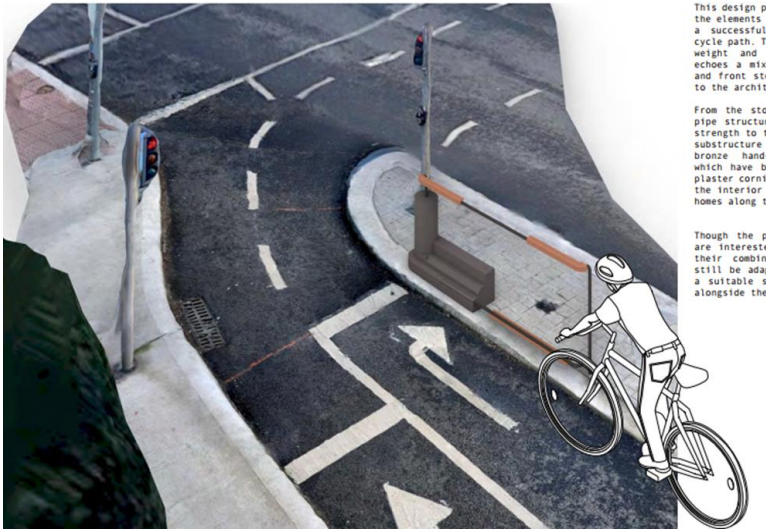
Launch of C2CC



Outstanding Paving works now progressing outside Burkes Bar – Amiens Street



Aerial view of the Alfie Byrne Junction with Clontarf Road



Artist Installation - Sketch

Central Area, Projects in Construction:

Royal Canal Greenway Phase 3

- Section 1: Cross Guns Bridge to Binns Bridge

This section of greenway fully opened to the public in March 2025. Works at Cross Guns Bridge are substantially complete. Some footpath works are outstanding at Binns Bridge. Snagging works will continue in this section throughout 2025.

- Section 2: Binns Bridge to Bloody Sunday Bridge

Binns Bridge east side ramp structure works are ongoing. Masonry works to the ramp façade and the lock chamber beneath Binns Bridge are substantially complete, and the temporary working platform was removed from the canal in April 2025. Footpath and road surfacing works on Bloody Sunday Bridge were completed in April 2025, with the signalised (toucan) crossing scheduled to be activated in May/June 2025.



Royal Canal Greenway, viewed from Lock 4



Binns Bridge toucan crossing



Binns Bridge east side ramp structure



Paving to lock chamber beneath Binns Bridge

Central Area, Projects in Construction:

Royal Canal Greenway Phase 3

- Section 3: Bloody Sunday Bridge to Clarke's Bridge

Security fencing to the boundary with Croke Park is ongoing. Works to the Clarke's Bridge west side ramp structure are also ongoing, with structural concrete works completed in April 2025. The Clarke's Bridge toucan crossing was substantially completed in February 2025 and the old pedestrian crossing was removed at the same time.

- Section 4: Clarke's Bridge to Newcomen Bridge

Repairs to the historic canal quay wall were completed in March 2025, with underground utilities completed in April. Works to the Clarke's Bridge east side ramp structure and the canal side footpath on Charleville Mall are ongoing. Planting also took place at Clarke's Bridge in April 2025.



Repaired canal quay wall at Charleville Mall, viewed from Clarke's Bridge



Bloody Sunday Bridge toucan crossing works



Clarke's Bridge west side ramp structure



Clarke's Bridge toucan crossing

Central Area - Projects in Design:

NCR Walking & Cycling Scheme: Dorset Street Lower to Amiens Street - Milestones

- **Dec 22-Jan 23**- Public Consultation on an interim scheme design
- **2023/ 2024**- Appointment of Consultants. Design revised following review of public consultation submissions, engagement with stakeholders and in line with new NTA Cycle Design Guidance. (Sep 2023)
- **Nov 2024** - Active Travel presented the new design to Elected members in Central Area.
- **Nov 24– Mar 25**- Further engagement with key stakeholders DFB, An Gardaí, Croke Park, Traffic Department etc to finalise details.
- **Mar 2025** - Road Safety Audit
- **May 2025** – 2nd Round of Public Consultation. Report on the 1st Public Consultation to be published along with the revised designs.

Key Features :

- Reallocation of existing road space to provide protected cycle lanes by using kerbs, car parking and where possible planting/greening.
- Upgrade to existing signalised junctions at Belvedere Rd, Fitzgibbon Street and Summerhill Junctions as well as improvements to local side road junctions



Route of North Circular Road (Dorset St. Lwr. to Amiens St) Active Travel Project

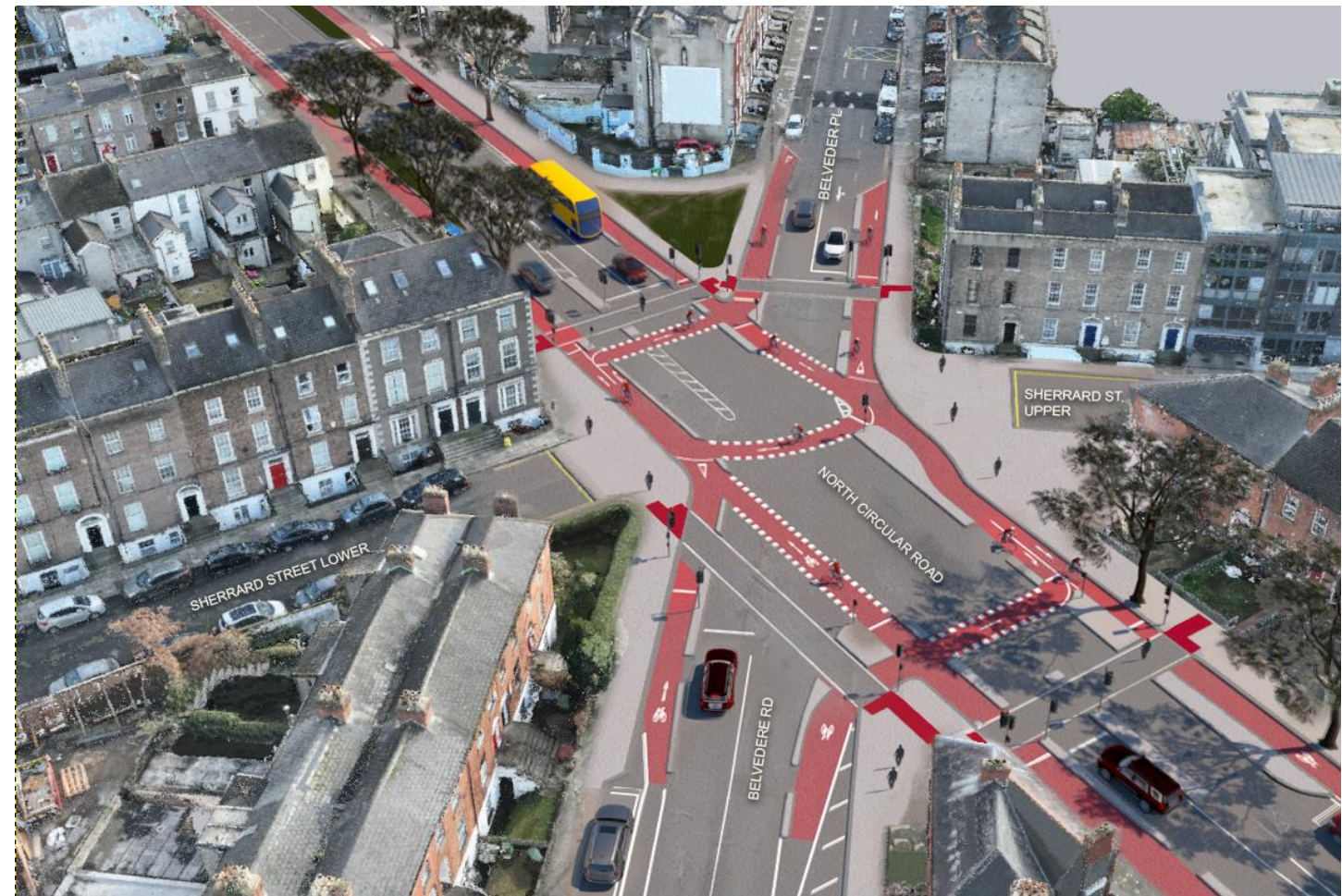
Central Area - Projects in Design:

NCR Walking & Cycling Scheme: Dorset Street

Lower to Amiens Street

Belvedere Junction

- Greater protection for pedestrians & cyclists
- Crossing points on all junction arms
- Modal filters at Sherrard St Upper & Sherrard St Lower. Access for pedestrians, cyclists and emergency vehicles



Photomontage of proposed North Circular Road/ Belvedere Junction

Modal Filter at Sherrard Street Lower.
Vehicular access via Portland Street North, Portland Place.

Modal Filter at Sherrard Street Upper.
Vehicular access via Belvedere Place, Mountjoy Square North, Gardiner Street Upper.

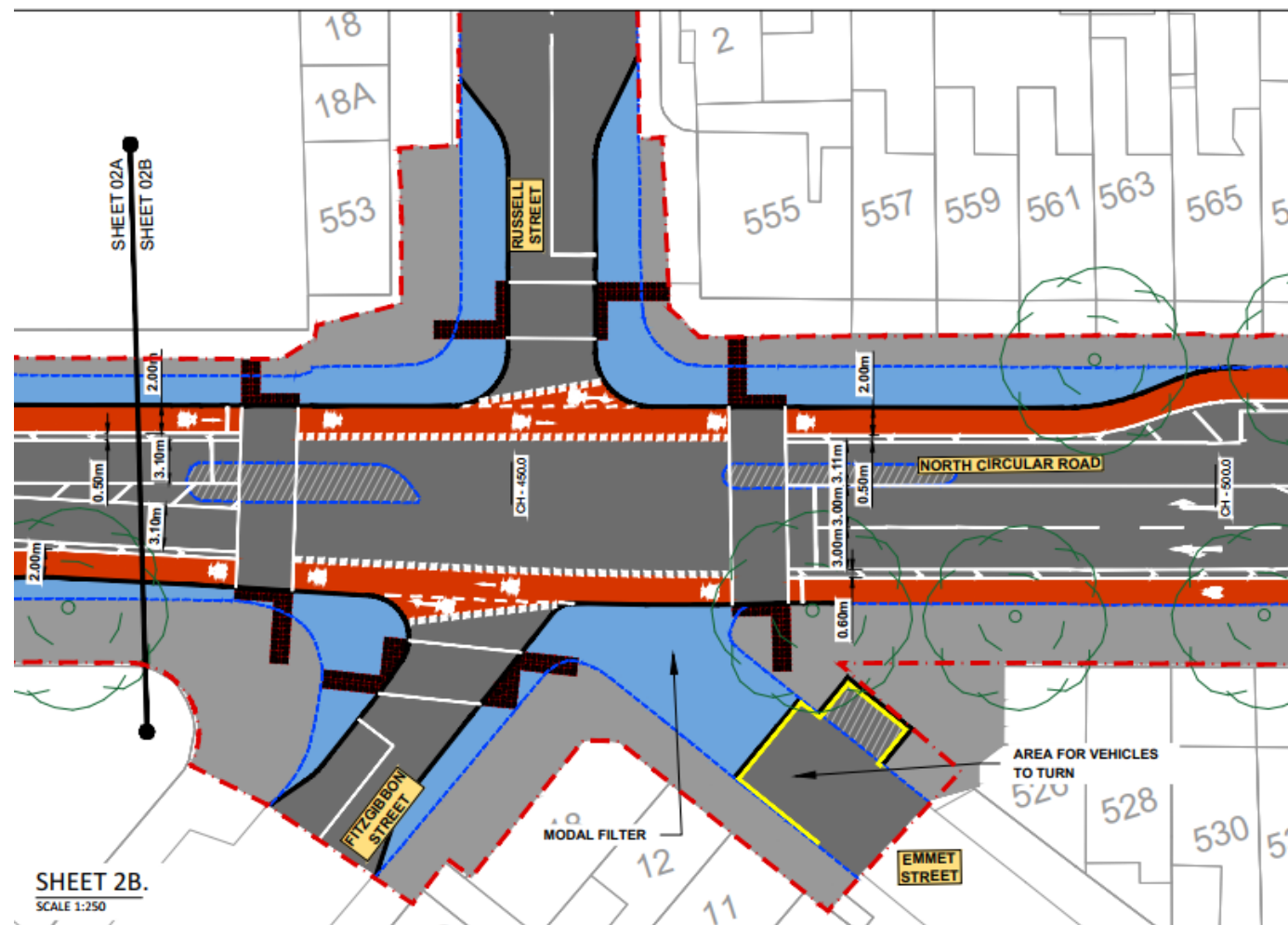
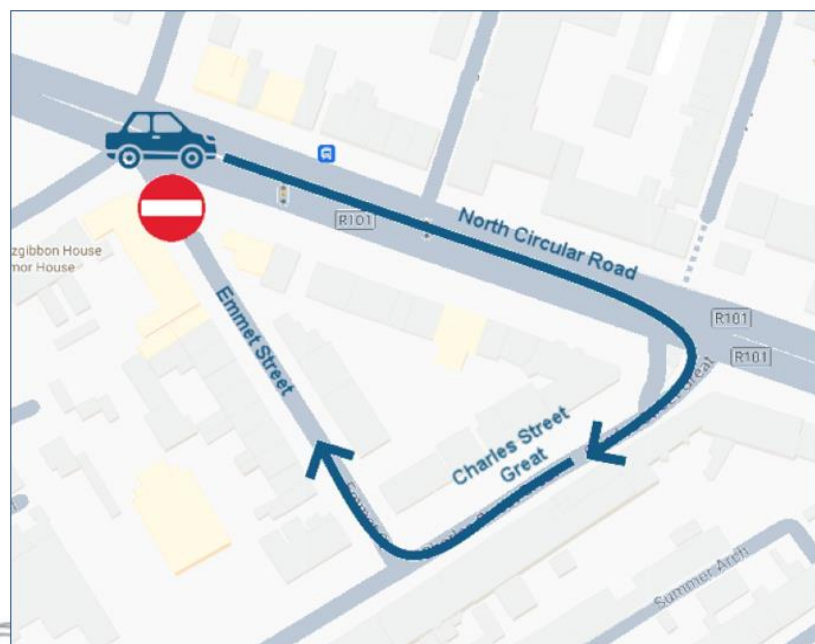
No left turn from North Circular Road (Westbound) to Belvedere Place.
Vehicular access via Fitzgibbon Street.

NCR Walking & Cycling Scheme: Dorset Street Lower to Amiens

Street

Fitzgibbon Street/ Russell St Junction

- Improved facilities for pedestrians & cyclists, signalised crossing points on all junction arms, modal filter at Emmet St.
- Design proposal updated following engagement with AGS/ DFB & Croke Park who had specific requirements regarding their crowd control responsibilities during events at Croke Park.
- Alternative route for Emmet St via Charles St Great



Design of North Circular Road/ Fitzgibbon St/ Russell St Junction



- Summerhill Junction

Improved facilities for pedestrians & cyclists by way of improved pedestrian crossings and segregated cycle facilities at the junction.



Central Area - Projects in Design:

NCR Walking & Cycling Scheme: Dorset Street Lower to Amiens Street

Additional Features

- Increased Cycle Parking
- Continuous Footways (where appropriate)
- Additional Greening (potential SuDS)
- Additional Loading Bay space
- Reduction of approximately 50 car spaces
- Six new Bus Stops (with bus islands)

Next Steps .

- **May 2025** Commencement of Public Consultation (Public consultation event to be held (Date TBC). Publication of public consultation report for interim design
- **Q4 2025** Completion of Detailed Design/ Tender for Contractor
- **Q1 2026** Commencement of Construction



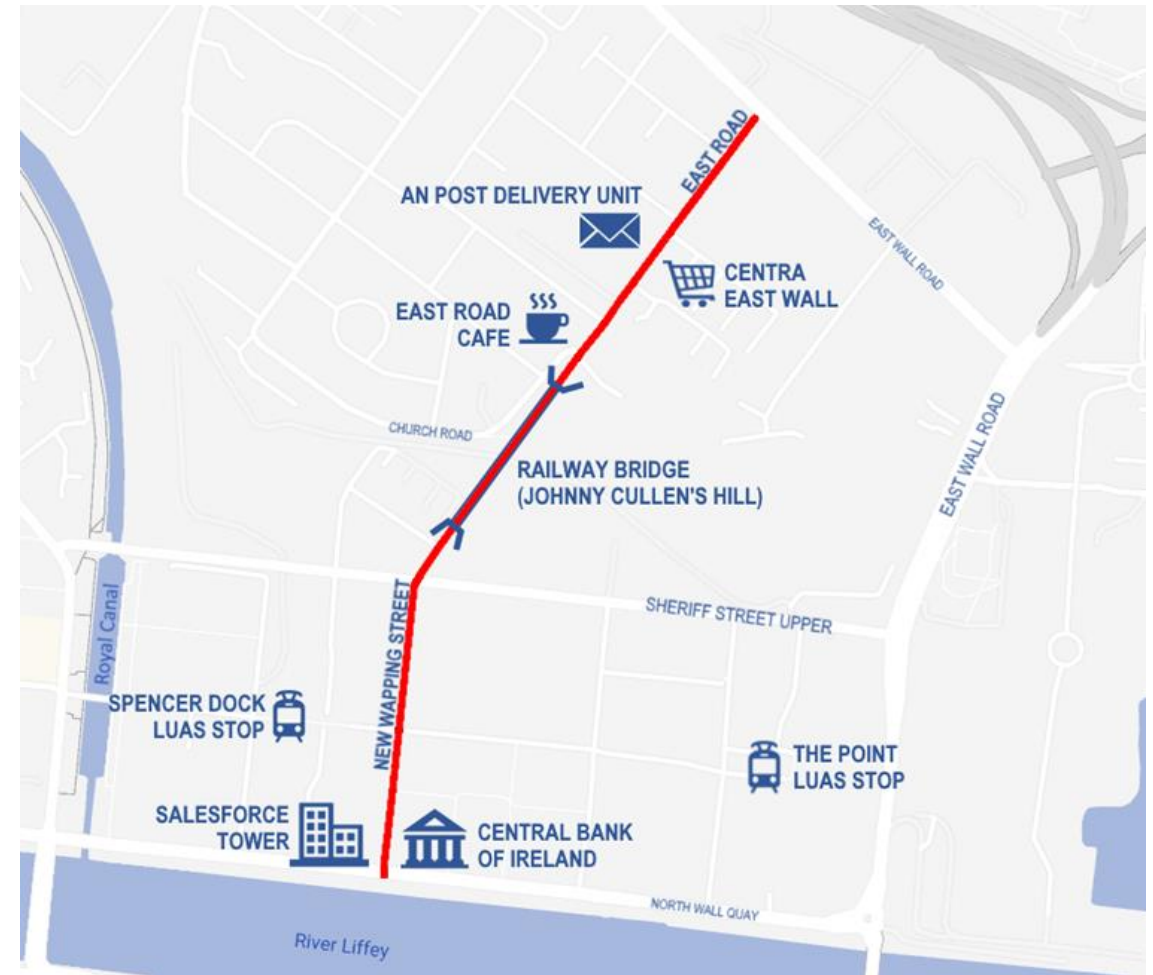
Central Area - Projects in Design:

East Wall to North Wall Active Travel Scheme

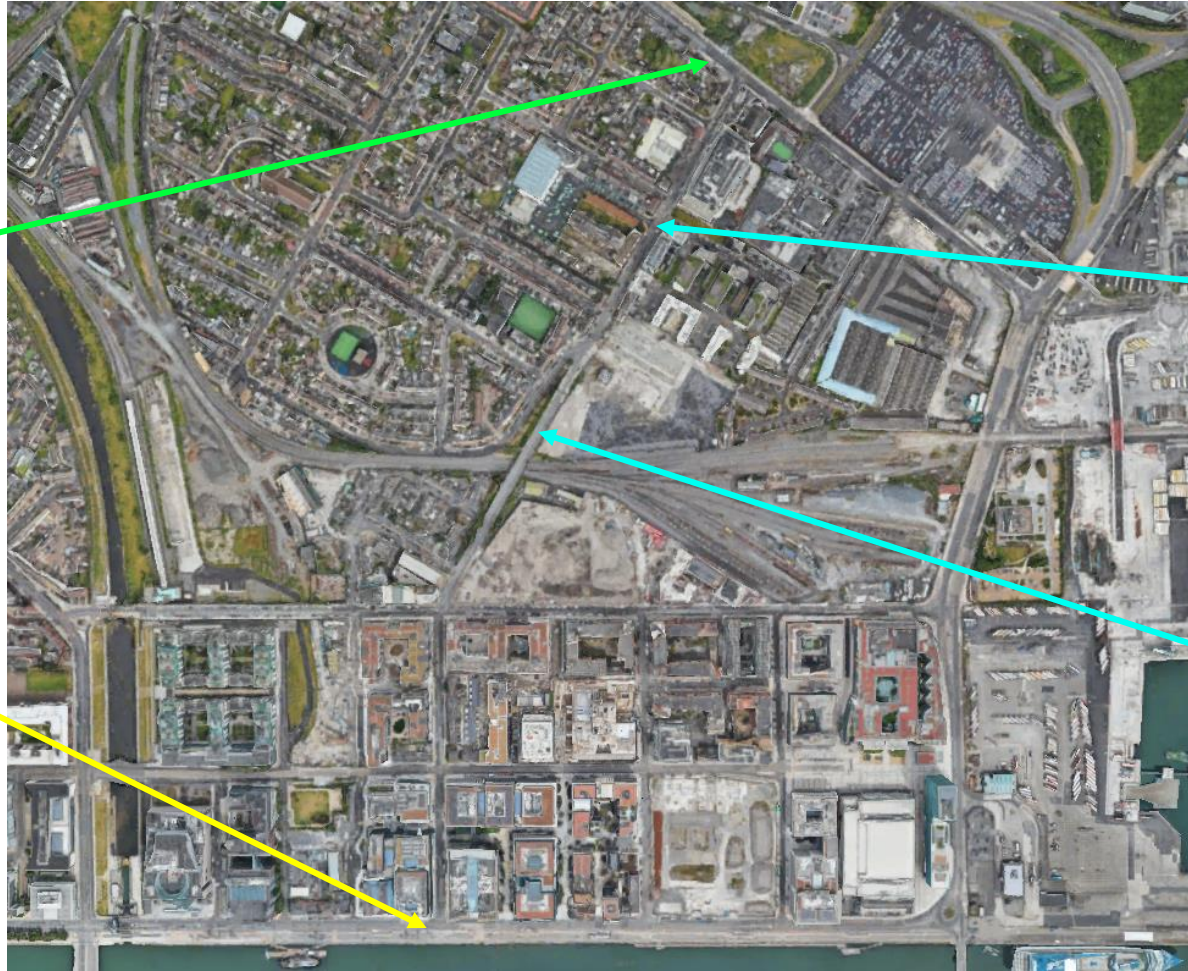
- Prioritised project within Dublin City Council's Active Travel Network
- Project objective includes to provide 1km of improved walking and cycling facilities on East Road and New Wapping Street.
- East Road and New Wapping Street links to existing cycling facilities on East Wall Road and North Wall Quay.
- Significant existing cycle use on East Road.(ca. 25% mode share at AM and PM peak)



East Road



Route of East Wall to North Wall



Connecting Existing Infrastructure

Overcoming Spatial Constraints

Central Area - Projects in Design:

East Wall to North Wall Active Travel Scheme – Early Engagement Workshop

- Workshop led by independent facilitator.
- The primary goal of the event was to hear local input into current challenges for walking and cycling in the area, and to hear local ideas for possible solutions to improve walking and cycling in the area.
- Approx. 20 people attended who were selected from a wider cross-section of individuals including people from the community groups, the local primary school, local sports clubs' businesses, residents and the school traffic warden.
- Participants were invited to outline current issues they encounter as footpath and road users in the area and led a discussion on what recommendations they had for improving conditions for all road users.
- A summary report will feature local community insights, which will greatly assist the project team in the Preliminary Design phase.
- Summary report circulated to participants and Elected Members of the Central Area Committee on 15th April prior to publication on the DCC website.



Participants at the East Wall to North Wall Early Engagement Workshop

Central Area - Projects in Design:

East Wall to North Wall Active Travel Scheme

Progress to Date

- **Q4 2024** - Active Travel Design Office Consultants appointed and reviewed high level options including early internal stakeholder engagement. Identification of constraints and opportunities.
- **January 2025** – Briefing with Central Area Elected Members
- **March 2025** – Early Engagement Workshop held in Sean O'Casey Community Centre on the 5th of March 2025.
- **April 2025** - Publication of Early Engagement Workshop report and Active Travel Design Office to commence Phase 2 Feasibility and Option Selection Stage

Next Steps

- The project team will now begin to develop concept designs for the improvement of walking and cycling facilities in East Wall.
- The preferred option will then be developed into a preliminary design and DCC will engage the wider community by hosting a public consultation and asking for the public's opinion of the proposed design

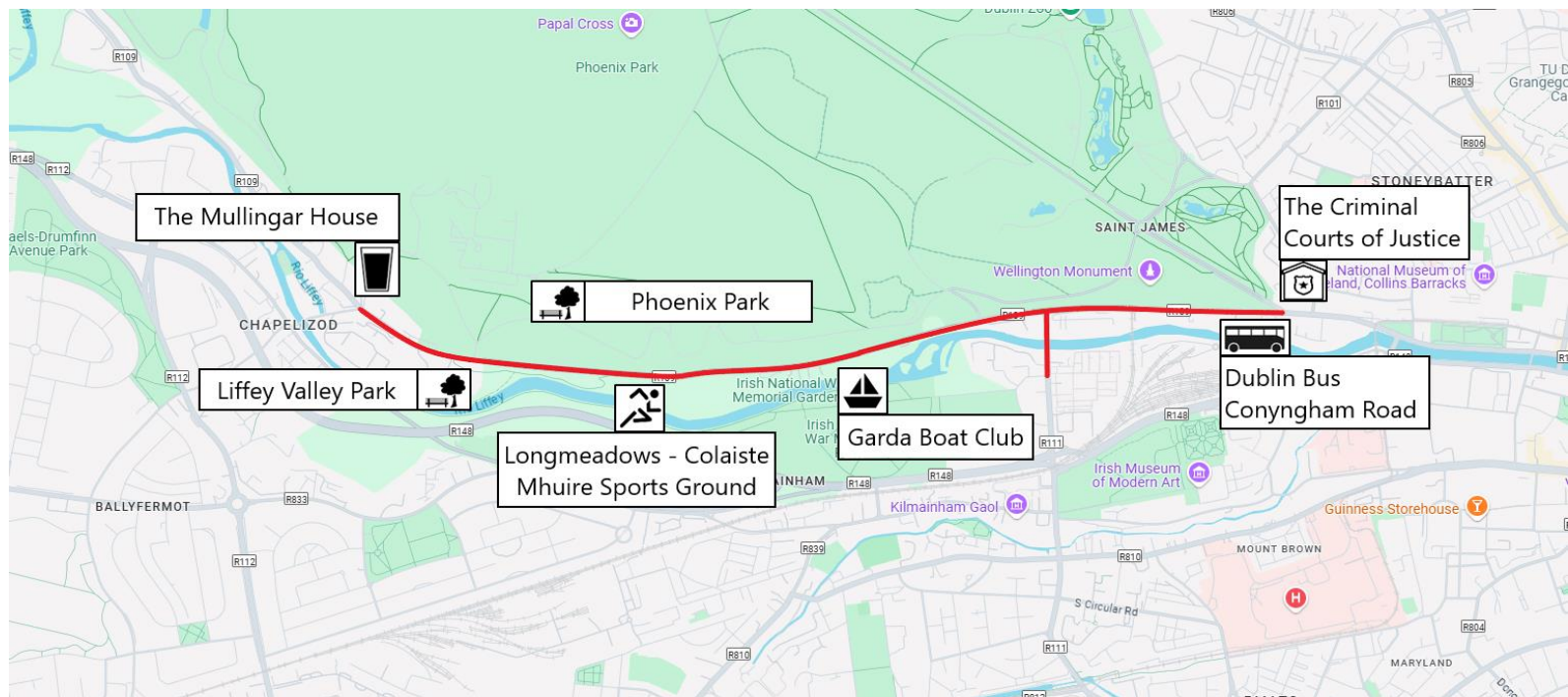


East Road in 1974 and in 2025

Central Area, Projects in Design:

Chapelizod Village to Conyngham Road (Chapelizod Road)

- Scheme will provide 3.1Km of improved walking & cycling facilities from Chapelizod Village to the junction of Conyngham Road and Chesterfield Avenue at the entrance to the Phoenix Park, linking to the Liffey Cycle Route.
- Includes 210m of the South Circular Road over Islandbridge and to link with the Active Travel project through the War Memorial Gardens and Liffey valley Park
- Concept development and options selection commenced in August 2024. Reviews with DCC Stakeholders Traffic, & Heritage / Conservation ongoing.
- Feasibility and Options Report along with a concept design is anticipated to be completed by May 2025. Preferred option is Two-way cycle track on the south side of Chapelizod Road.
- Meetings held with Chapelizod Residents Groups to review proposals.



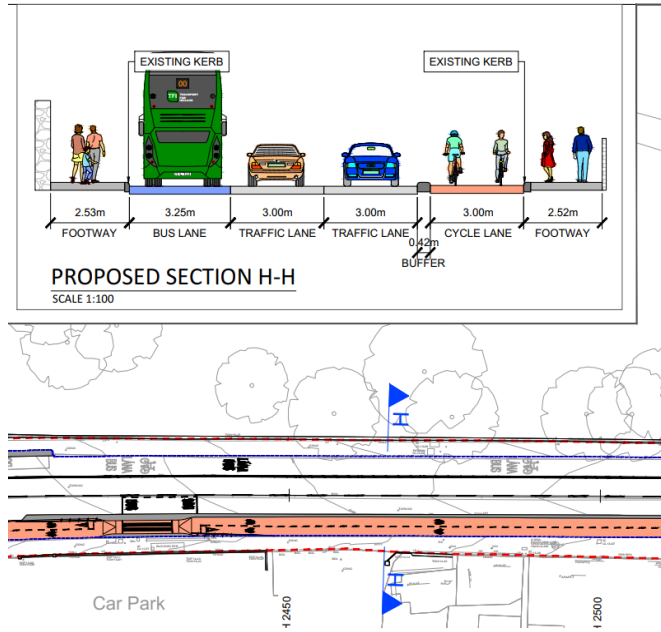
Chapelizod Village to Conyngham Road (Chapelizod Road)

Island bridge Commemorative Bridge - OPW

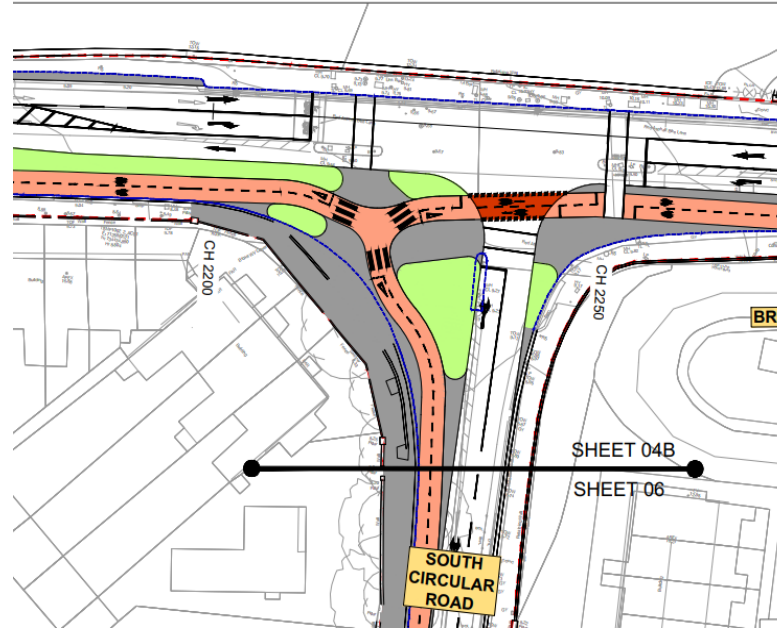
To connect with the proposed pedestrian / cycle bridge across the River Liffey from the War Memorial Gardens to Conyngham Road on the northern side of the Liffey. The bridge project is being progressed by the OPW. Coordination is ongoing between DCC Active Travel & OPW for plaza works on Chapelizod Road.

Central Area, Projects in Design:

Chapelizod Village to Conygham Road (Chapelizod Road)



Typical Section of Two-Way Cycle Track



Junction with South Circular Road



Connection to OPW War Memorial Garden Bridge

Central Area, Projects in Design:

- **Dalymount to Cabra Cross Cycling & Walking Scheme: Cabra Road**

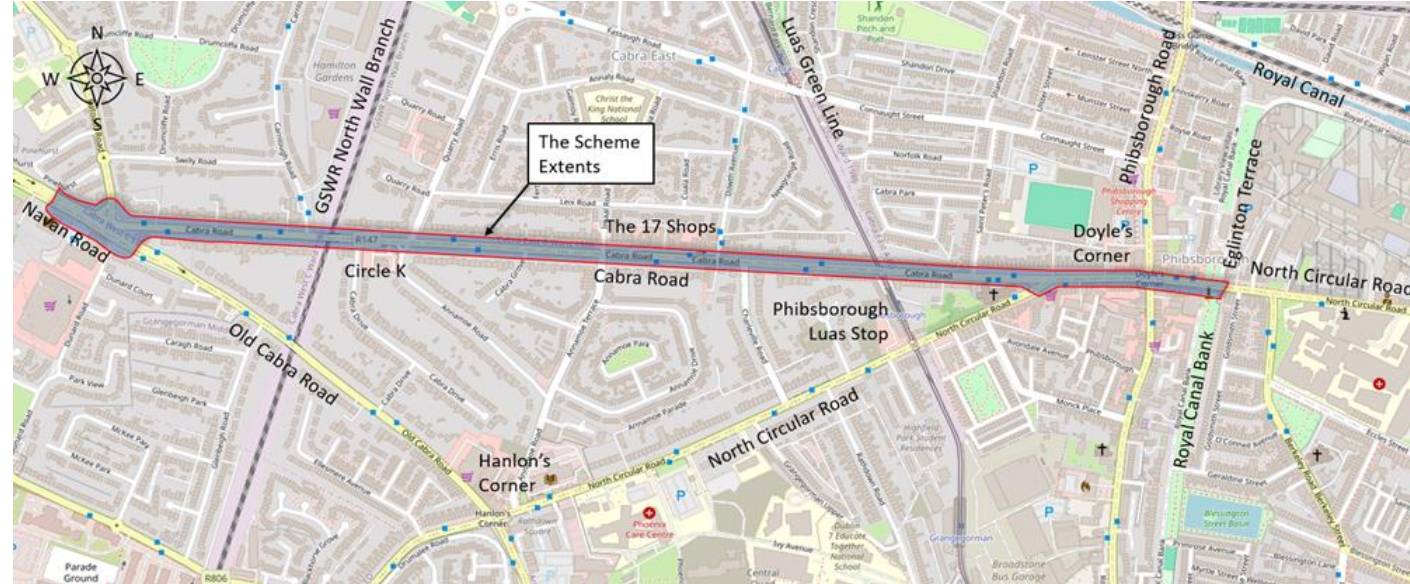
Scheme will provide 1.5k of improved walking & cycling facilities from Cabra Cross (junction with the Navan Road) to junction with North Circular Road /Eglinton Terrace.

- Q4 2024 Concept development and options selection commenced
- Dec 2024 Feasibility and Options Report & concept design submitted to the NTA
- Feb 2025 NTA authorised project to progress to Preliminary Design
- Feb – April 2025 Consultants proceeding with Preliminary Design. Meetings with Conservation, Archaeology and Dalymount Park Redevelopment project team.

Engaging with the bus teams as the project links with two **Bus Connects projects**, i.e the Blanchardstown to City Centre CBC at Navan Road/ Cabra Road & Ballymun to City Centre CBC at Phibsborough Road/ Eglinton Terrace.

Design requires a variety of cycling infrastructure solutions due to various constraints on Cabra & Dalymount Road such as parking, Bus lanes, Luas Bridge etc.

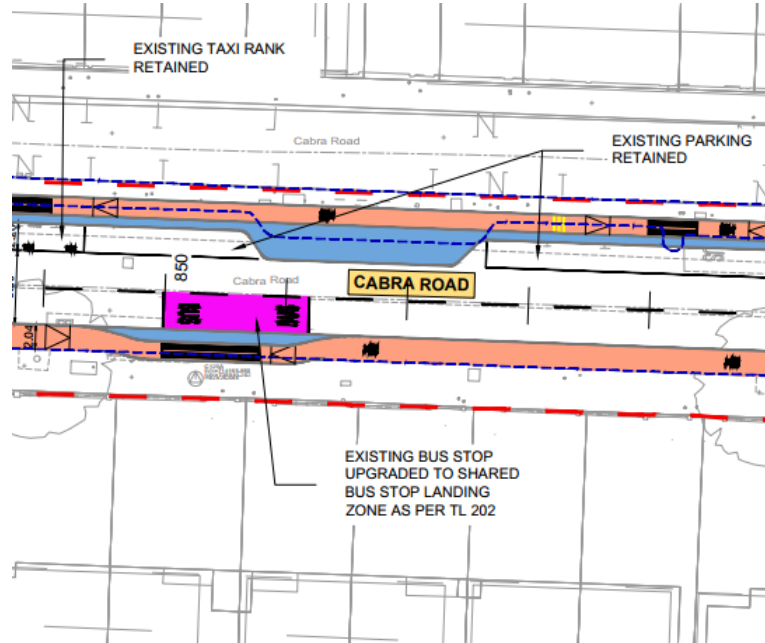
Scheme will have a mix of one way cycles on each side of road, Two-way cycle tracks and shared bus/cycle lanes.



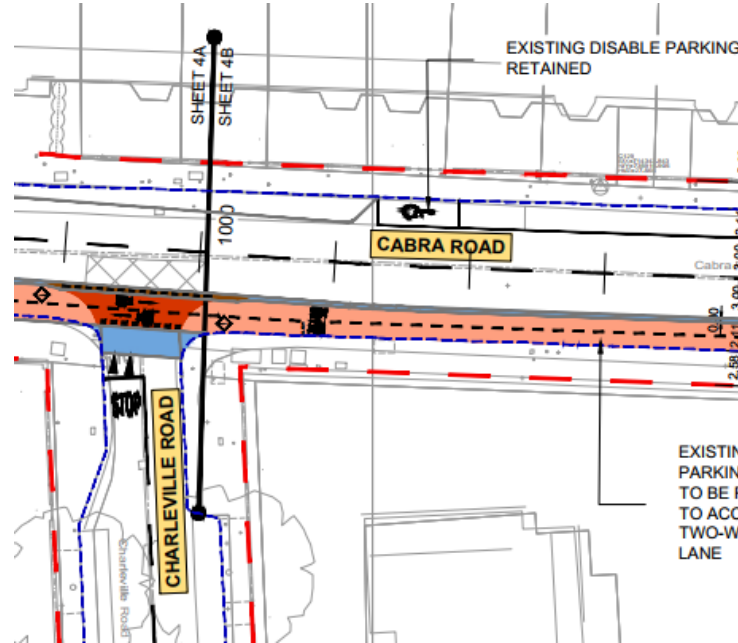
Scheme Map of Dalymount of Cabra Cross

Central Area, Projects in Design:

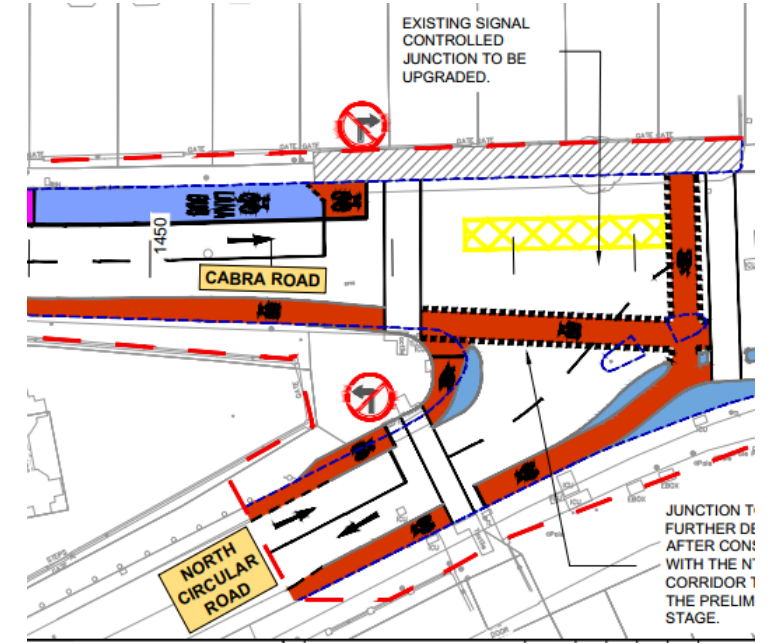
Dalymount to Cabra Cross Cycling & Walking Scheme: Cabra Road



Detail at Cabra Road Shops showing Taxi Rank & Parking maintained with cycle tracks either side of road.



Transition to a Two-way Cycle Track to allow parking to be maintained along Cabra Road



NCR Junction with shared Bus / Cycle Lane

Central Area, Projects in Design:

- Ratoath Road, Cappagh Road [Walking & Cycling Route (4.1km)]
(Cabra to Blanchardstown Active Travel Route)

The project will deliver 4.3km of walking and cycling measures from the junction of Navan Road/ Cabra Road to New Cross College, Cappagh Road at the border with Fingal County Council.

Two Projects along Ratoath Road

- Project 1 - main 4.3km route
- Project 2 - restricted 1km section (Westwood to Ratoath Ave)

Public Consultation on an interim scheme design was undertaken in 2023. Design was revised following review of public consultation submissions and in line with new NTA Cycle Design Guidance.

Consultants are progressing with revised Preliminary Design and the project team are engaging with key stakeholders to finalise details.

A second round of Public Consultation is to be undertaken Q2/Q3 2025 at which time the Public Consultation Report will be published along with the preliminary design.

Key Changes

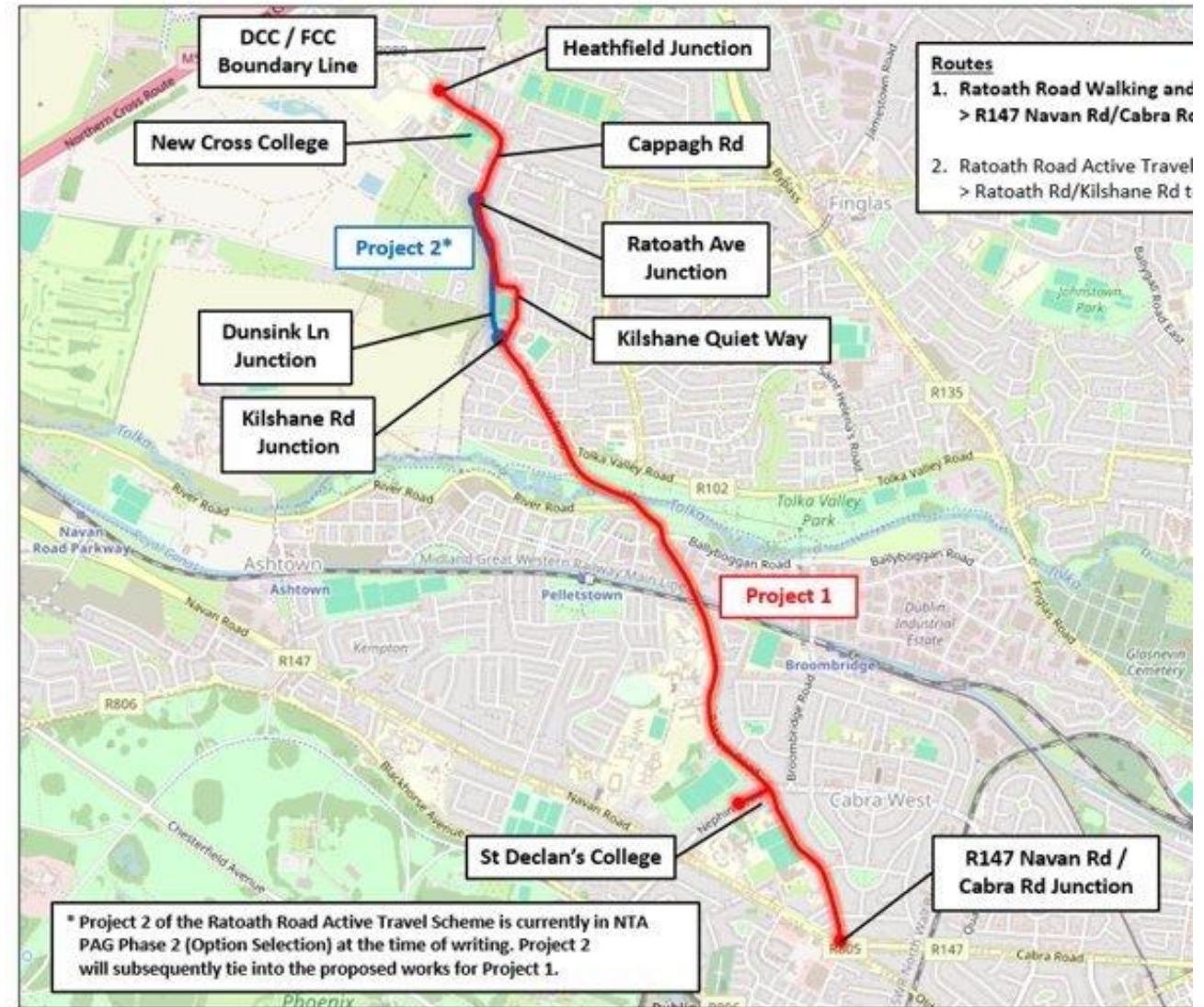
- Segregated cycletracks
- Upgrade of Junctions (signalised junctions & side road junctions. 18 total fully upgraded.
- Safe route to School Treatment (SRTS).



Photomontage of Ratoath Road walking & cycling route

Central Area, Projects in Design:

- Ratoath Road, Cappagh Road [Walking & Cycling Route (4.1km)]
(Cabra to Blanchardstown Active Travel Route)
- The 4.3km project follows a linear route from Cabra Cross junction (Cabra Road and Ratoath Road) to the junction of Heathfield drive and Cappagh Road. (Fingal Co Co).
- The scheme will provide one –way cycle tracks on both sides for the majority of the route to Rathvilly Road
- Two way cycletrack along green verge from Rathvilly Road to Kilshane Road.
- Shared space along Kilshane Road & Kilshane Drive before rejoining Ratoath Road at Ratoath Ave
- One way on both sides from Ratoath Ave to Cappagh Rd. (Heathfield Drive)
- New pedestrian & cycle crossing at New Cross College



Central Area, Projects in Design:

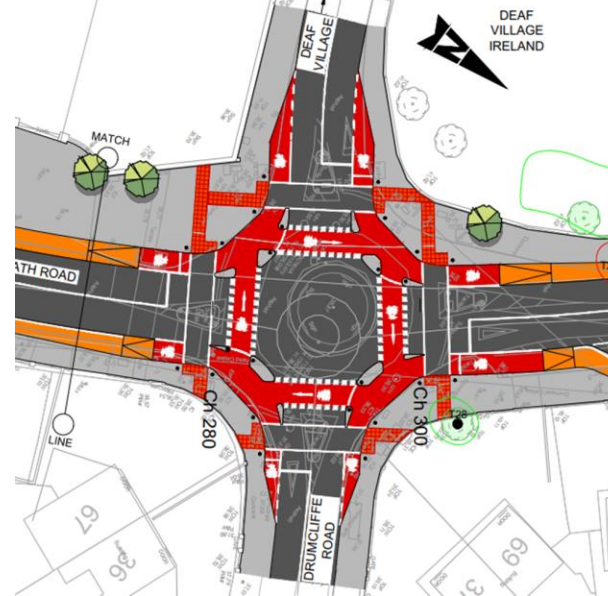
- Ratoath Road, Cappagh Road [Walking & Cycling Route (4.1km)]
(Cabra to Blanchardstown Active Travel Route)

Upgrade of Junctions

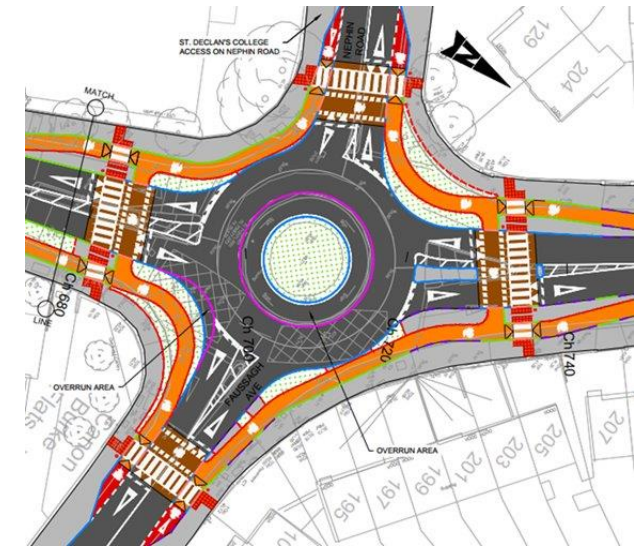
- Drumcliffe Road -> Signalised junction),
- Nephin Road (Bogies Roundabout),
- Ballyboggan Rd, Tolka Valley Road, Cappagh Rd junctions &
- Other side road junctions. 18 junctions in total fully upgraded.

Safe route to School Treatment (SRTS)

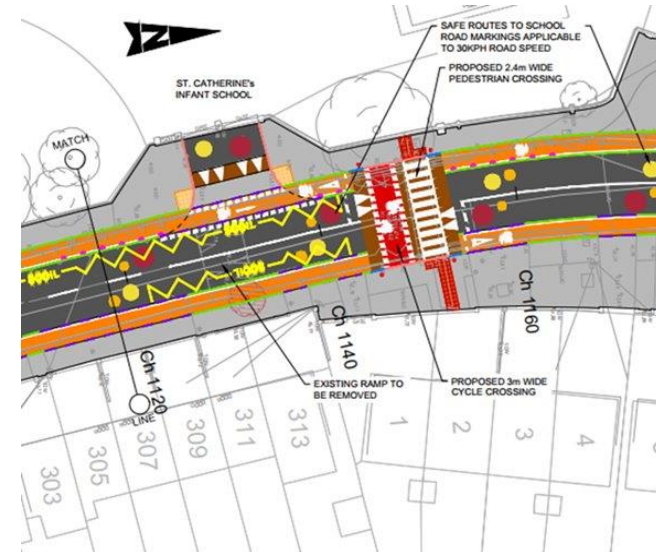
- St Catherine's Primary School (Ratoath rd)
- Scoil Mhuire (Ratoath Road)
- St Declans (Nephin rd).
- New Cross College (Cappagh Rd),



New junction at Drumcliffe Road / Entrance to Deaf Village



Nephin Road Roundabout Upgrade



School Zone at St Catherine's & St Marys Dominican Schools

Central Area, Projects in Design:

- Ratoath Road, Cappagh Road [Walking & Cycling Route (4.1km)]

Impacts

Potential **Tree** Impacts (approx 40 nr). Awaiting Arborist Report & to discuss with Parks.
Will be replaced with new trees & landscaping

Investigating options with Deaf Village to utilise lands to widen footpath.
Would allow additional tree planting to be carried out.
Proposal subject to Conservation Assessment & NTA approval.

Some loss of informal **Parking** along Ratoath Road to allow tree pits to be installed.
Between Drumcliffe Rd & Faussagh Ave approx 85% parking area expected to retained.

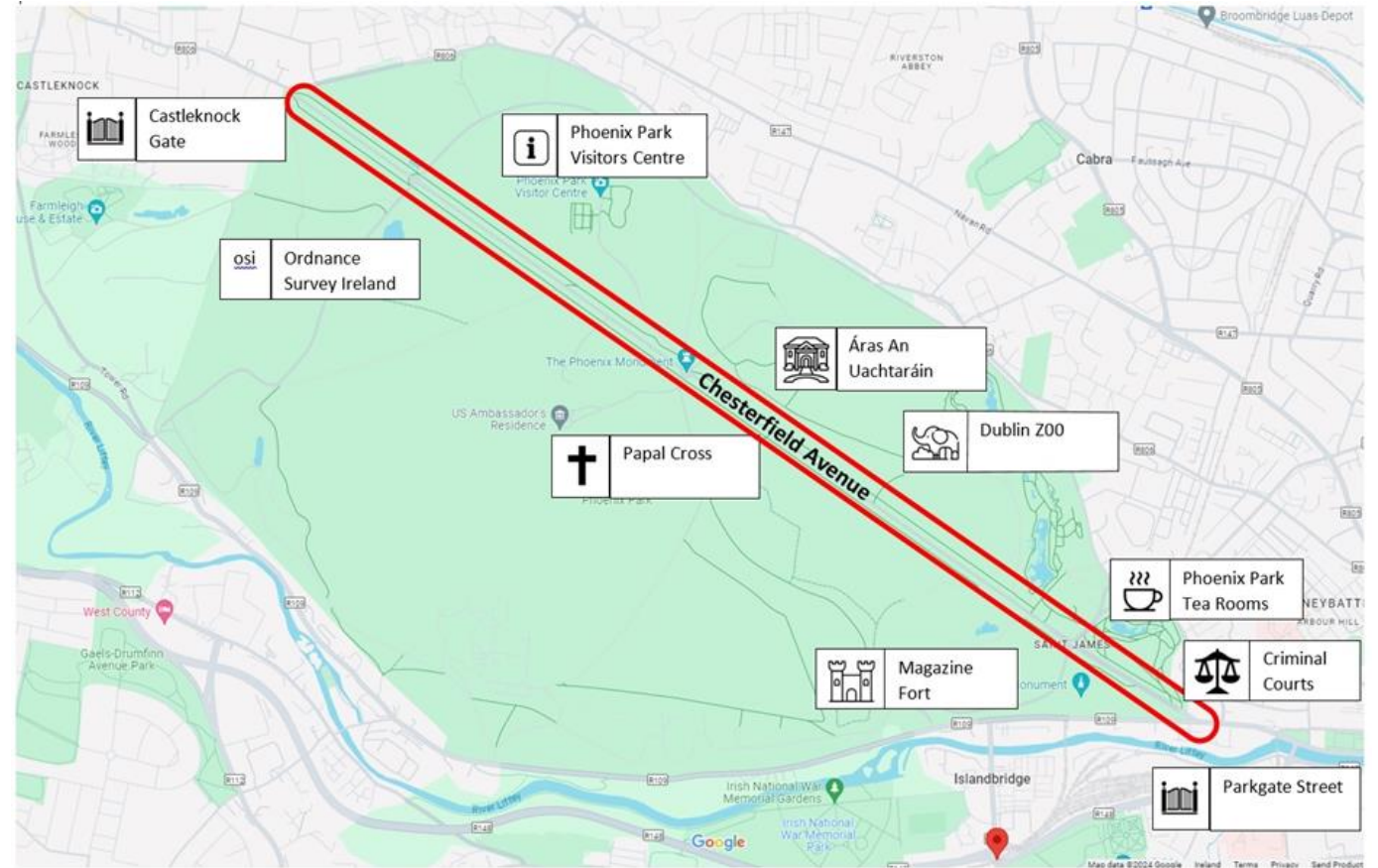
Phase Description	To commence:
Preliminary Design Phase	Current Phase
Public Consultation	Q2/ Q3 2025
Detailed Design Phase	Q4 2025
Tender Action, Evaluation & Award Phase	Q3 2026
Construction & Implementation	Q4 2026



Photomontage of Ratoath Road / Rathvilly Road.

Central Area, Projects in Design: Chesterfield Avenue (4.2km)

- The Project will provide **safe, inclusive walking & cycling facilities** to remain the interim cycle route currently in place
- Utilise **Sustainable drainage** nature-based drainage systems
- Provide **Junction upgrades** to separate cyclists and pedestrians from drivers
- Includes **Landscape design** with appropriate, location-sensitive planting and paving materials in accordance with approved palette of materials
- **Design of bus stops** to replace temporary bus stops installed and integrate **pedestrian and cycle crossings** along the route in coordination with the NTA
- The Active Travel Support Office (ATSO) have been appointed to develop the project from preliminary design, visualisations, stakeholder consultation, AA & EIA screenings, tree surveying, archaeological assessment reports, securing all statutory consents, tender documentation & evaluations, inspection of construction works, issue of statutory certification on completion to handover.
- Integrate with the new Heuston Station Active Travel bridge at Parkgate Street



Chesterfield Avenue Active Travel Project

Central Area, Projects in Design:

Chesterfield Avenue (4.2km)

- Design options developed and are currently being assessed to identify the emerging preferred option.
- Work is progressing on the Environmental Screening Reports
- Traffic surveys were carried out in 2024 and the traffic modelling for the potential options has been completed.

Next Steps

- Q2 2025 Complete Concept Development and Option Selection
- Q2 2025 Being Preliminary Design
- Q3 2025 Public Consultation Process on the preferred option
- Q4 2025 Statutory Process



Chesterfield Avenue Active Travel Project

A map of the Dublin City Council area, showing the city's boundaries and internal road network. The map is overlaid with the title text.

Active Travel Community Engagement and Participation

Central Area - Projects in Design

- **Amiens Street to City/George's Quay**

This scheme will link the Clontarf to City Centre scheme with the River Liffey, it is currently at Options selection stage with an Options report due to be submitted to the NTA outlining the Emerging Preferred Route.

- **Royal Canal Greenway – Phase 4 (5.25 km)**

Royal Canal Phase 4A

The portion of the project was completed as part of the Royal Canal Phase 3 project.

Royal Canal Phase 4B

The project will deliver 4.3km of walking and cycling facilities along the Royal Canal, from Cross Guns Bridge (Phibsborough Road) to the city boundary at Ashtown.

There was no activity in the last quarter. A request for further information was received from An Bord Pleanála to inform their decision on the Environment Impact Assessment Screening.

Royal Canal Phase 4C

Phase 4C is the Rail underpass on the main Greenway route, a ground investigation (GI) Contract which will guide the design is ongoing. Progress has been hindered by unavailability of the Ground Investigation Contractor.

Royal Canal Phase 4D

Phase 4D consists of an Active Travel link between Tolka Valley Park and the Phoenix Park at Ashtown Gate. The Options Assessment Report remains in Draft with Construction programmed for post 2028.



Photomontages of Royal Canal Greenway Phase 4



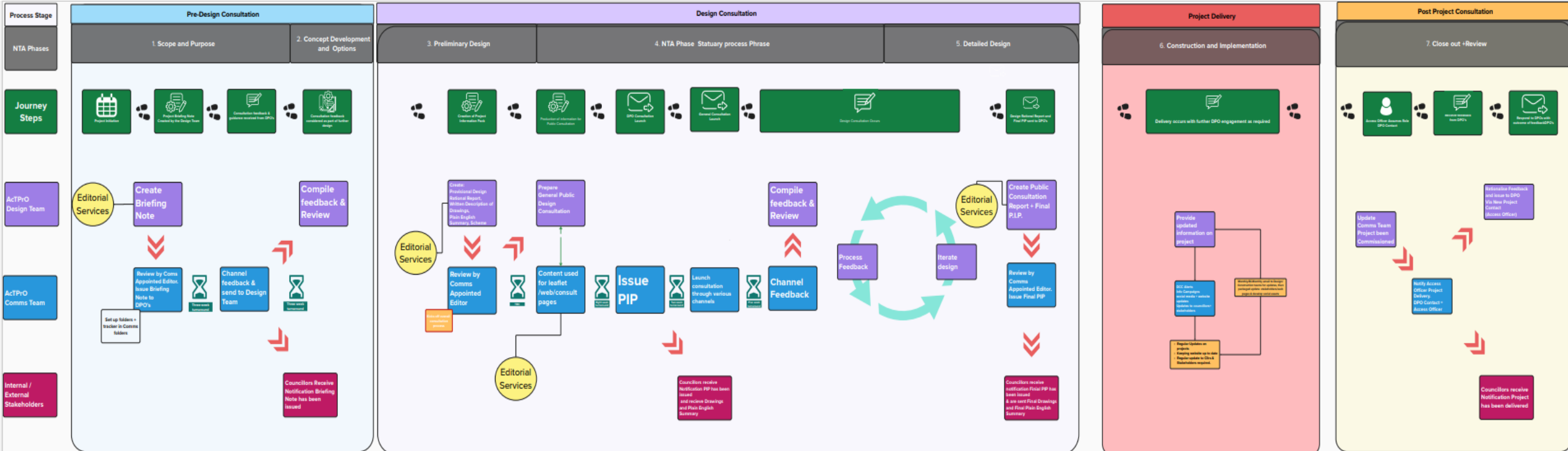
Our Communication Process with the Public



Email: activetraveloffice@dublincity.ie

Disabled Persons Organisation Consultation Process

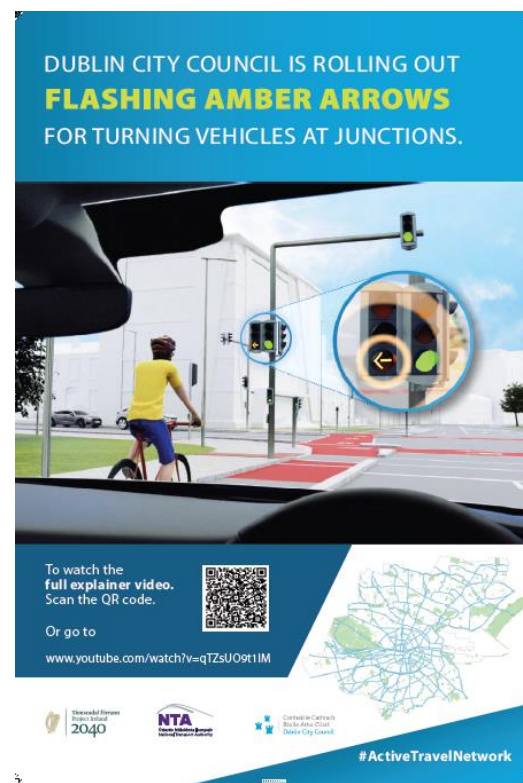
- Assigned designated point of contact with the ActPro Office for DPO's to engage with.
- A Briefing Note is issued at Pre-Design Consultation inviting DPO to provide guidance and feedback
- Project Info Pack is sent to all DPO's two weeks before general consultation begins
- DPO's are engaged with throughout the lifetime of all Active Travel projects



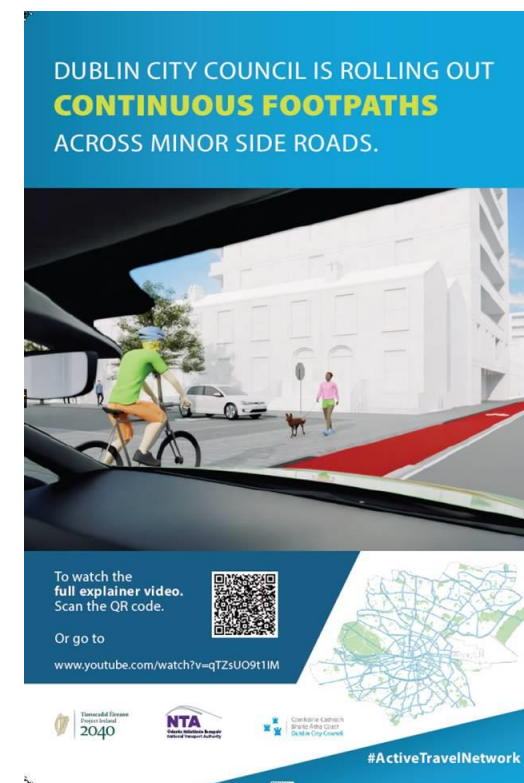
Information Campaigns about new infrastructure

- **Goal:** Ensure road users know how to behave / alleviate safety risks
- **Audience:** Road users who live, work & pass through area
- **Components:**
 - ☐ Animated videos
 - ☐ PR (press releases)
 - ☐ Social media campaign
 - ☐ Leaflet drops
 - ☐ Webpage
 - ☐ Bus Adverts
- **Timeline:** Launched Q3 2024

[Island Bus Stops | Dublin City Council](#)



Bus stop posters



Other Projects

Behavioural Change Campaign



Campaign with regard to sharing space safely, (to include drivers), that we drive, cycle and walk with care across the city. In partnership with NTA and Dept. of Transport.

Child Mobility In the City

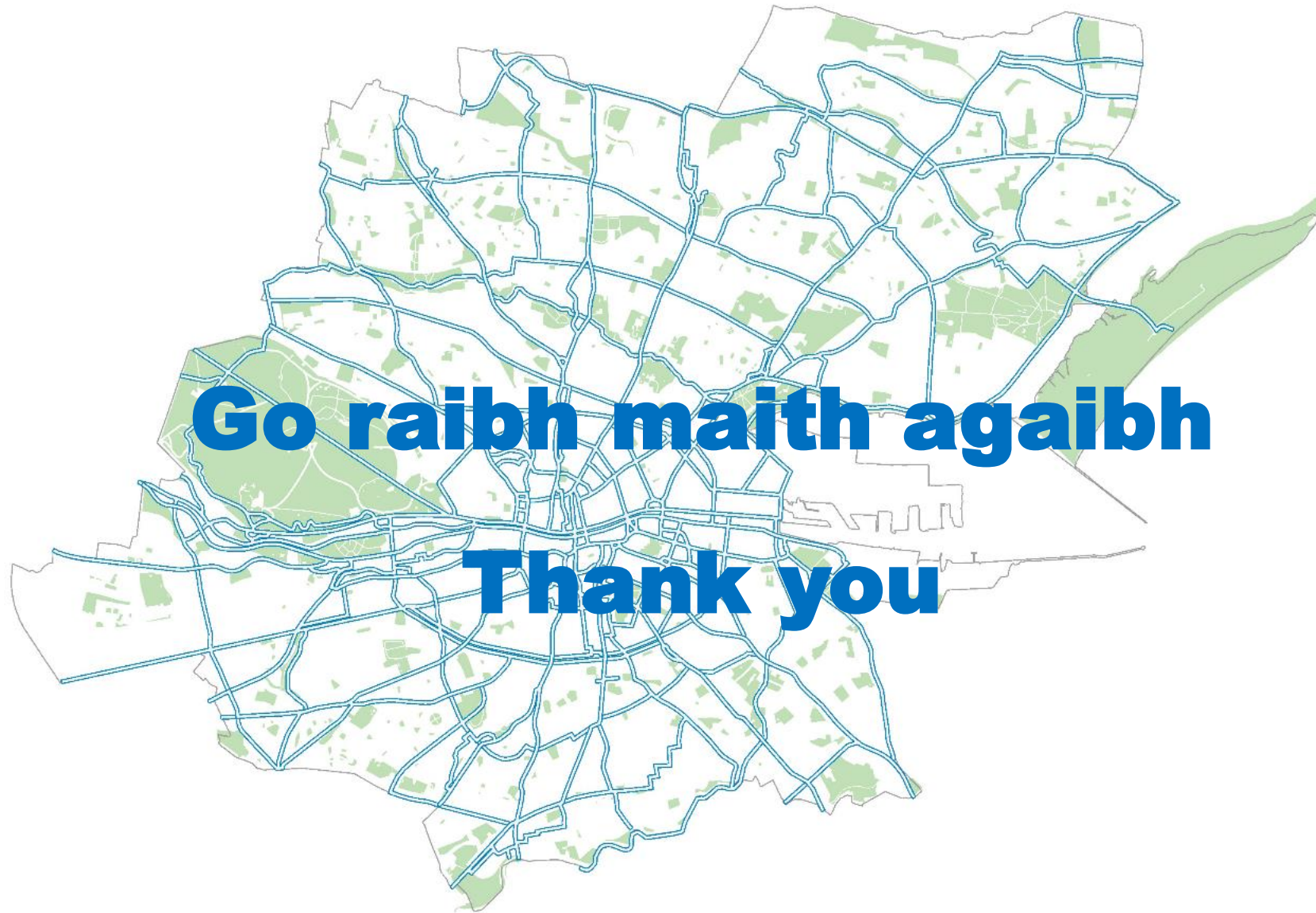


First Challenge to come from Climate Action Plan, looks at developing safer routes for children to move about the city. Pilot located in NEIC, a number of workshops held with local children.

Data Insights



Our main objective is to increase the knowledge on active travel patterns in the city. This **data will inform future infrastructure planning and investment and improve safe and active transit options.**



Go raibh maith agaibh
Thank you